



S J P N Trust's

**Hirasugar Institute of Technology, Nidasoshi.**

*Inculcating Values, Promoting Prosperity*

Approved by AICTE, Recognized by Govt. of Karnataka and Affiliated to VTU Belagavi

ECE Dept.

NS

VIII Sem

2017-18

**Department of Electronics & Communication Engg.**

**Course : Network Security**

**Sem.: 8<sup>th</sup> (2017-18 EVEN)**

**Course Coordinator:**

**Prof. Nyamatulla M Patel**

# CRYPTOGRAPHY AND NETWORK SECURITY

Unit-06

**Intruders**



# Intruders

*They agreed that Graham should set the test for Charles Mabledene. It was neither more nor less than that Dragon should get Stern's code. If he had the 'in' at Utting which he claimed to have this should be possible, only loyalty to Moscow Centre would prevent it. If he got the key to the code he would prove his loyalty to London Central beyond a doubt.*

**—Talking to Strange Men, Ruth Rendell**

# Intruders

- significant issue for networked systems is hostile or unwanted access
- either via network or local
- can identify classes of intruders:
  - masquerader
  - misfeasor
  - clandestine user
- varying levels of competence

# Intruders

- clearly a growing publicized problem
  - from “Wily Hacker” in 1986/87
  - to clearly escalating CERT stats
- may seem benign, but still cost resources
- may use compromised system to launch other attacks

# Intrusion Techniques

- aim to increase privileges on system
- basic attack methodology
  - target acquisition and information gathering
  - initial access
  - privilege escalation
  - covering tracks
- key goal often is to acquire passwords
- so then exercise access rights of owner

# Password Guessing

- one of the most common attacks
- attacker knows a login (from email/web page etc)
- then attempts to guess password for it
  - try default passwords shipped with systems
  - try all short passwords
  - then try by searching dictionaries of common words
  - intelligent searches try passwords associated with the user (variations on names, birthday, phone, common words/interests)
  - before exhaustively searching all possible passwords
- check by login attempt or against stolen password file
- success depends on password chosen by user
- surveys show many users choose poorly

# Password Capture

- another attack involves **password capture**
  - watching over shoulder as password is entered
  - using a trojan horse program to collect
  - monitoring an insecure network login (eg. telnet, FTP, web, email)
  - extracting recorded info after successful login (web history/cache, last number dialed etc)
- using valid login/password can impersonate user
- users need to be educated to use suitable precautions/countermeasures



# Intrusion Detection

- inevitably will have security failures
- so need also to detect intrusions so can
  - block if detected quickly
  - act as deterrent
  - collect info to improve security
- assume intruder will behave differently to a legitimate user
  - but will have imperfect distinction between

# Approaches to Intrusion Detection

- statistical anomaly detection
  - threshold
  - profile based
- rule-based detection
  - anomaly
  - penetration identification



# Audit Records

- fundamental tool for intrusion detection
- native audit records
  - part of all common multi-user O/S
  - already present for use
  - may not have info wanted in desired form
- detection-specific audit records
  - created specifically to collect wanted info
  - at cost of additional overhead on system

# Statistical Anomaly Detection

- threshold detection
  - count occurrences of specific event over time
  - if exceed reasonable value assume intrusion
  - alone is a crude & ineffective detector
- profile based
  - characterize past behavior of users
  - detect significant deviations from this
  - profile usually multi-parameter

# Audit Record Analysis

- foundation of statistical approaches
- analyze records to get metrics over time
  - counter, gauge, interval timer, resource use
- use various tests on these to determine if current behavior is acceptable
  - mean & standard deviation, multivariate, markov process, time series, operational
- key advantage is no prior knowledge used

# Rule-Based Intrusion Detection

- observe events on system & apply rules to decide if activity is suspicious or not
- rule-based anomaly detection
  - analyze historical audit records to identify usage patterns & auto-generate rules for them
  - then observe current behavior & match against rules to see if conforms
  - like statistical anomaly detection does not require prior knowledge of security flaws

# Rule-Based Intrusion Detection

- rule-based penetration identification
  - uses expert systems technology
  - with rules identifying known penetration, weakness patterns, or suspicious behavior
  - rules usually machine & O/S specific
  - rules are generated by experts who interview & codify knowledge of security admins
  - quality depends on how well this is done
  - compare audit records or states against rules

# Base-Rate Fallacy

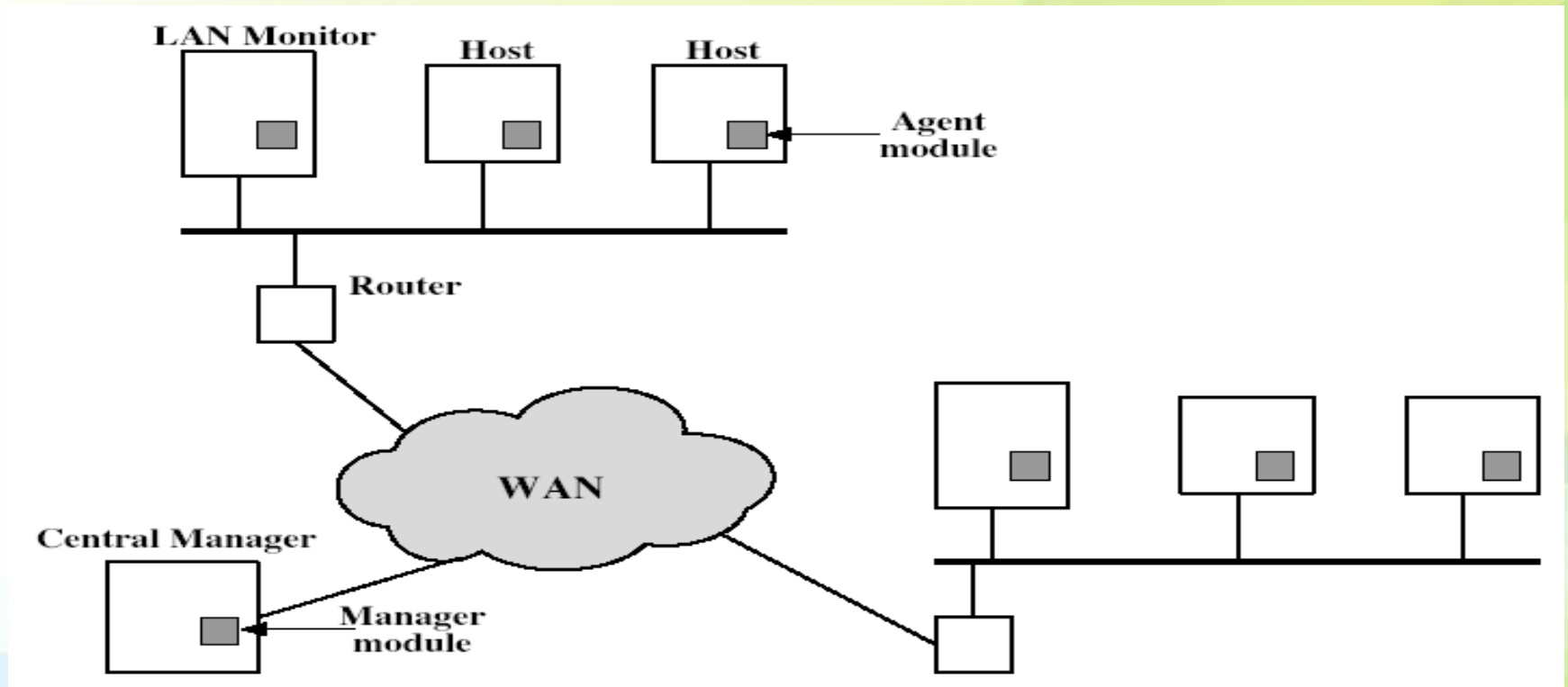
- practically an intrusion detection system needs to detect a substantial percentage of intrusions with few false alarms
  - if too few intrusions detected -> false security
  - if too many false alarms -> ignore / waste time
- this is very hard to do
- existing systems seem not to have a good record



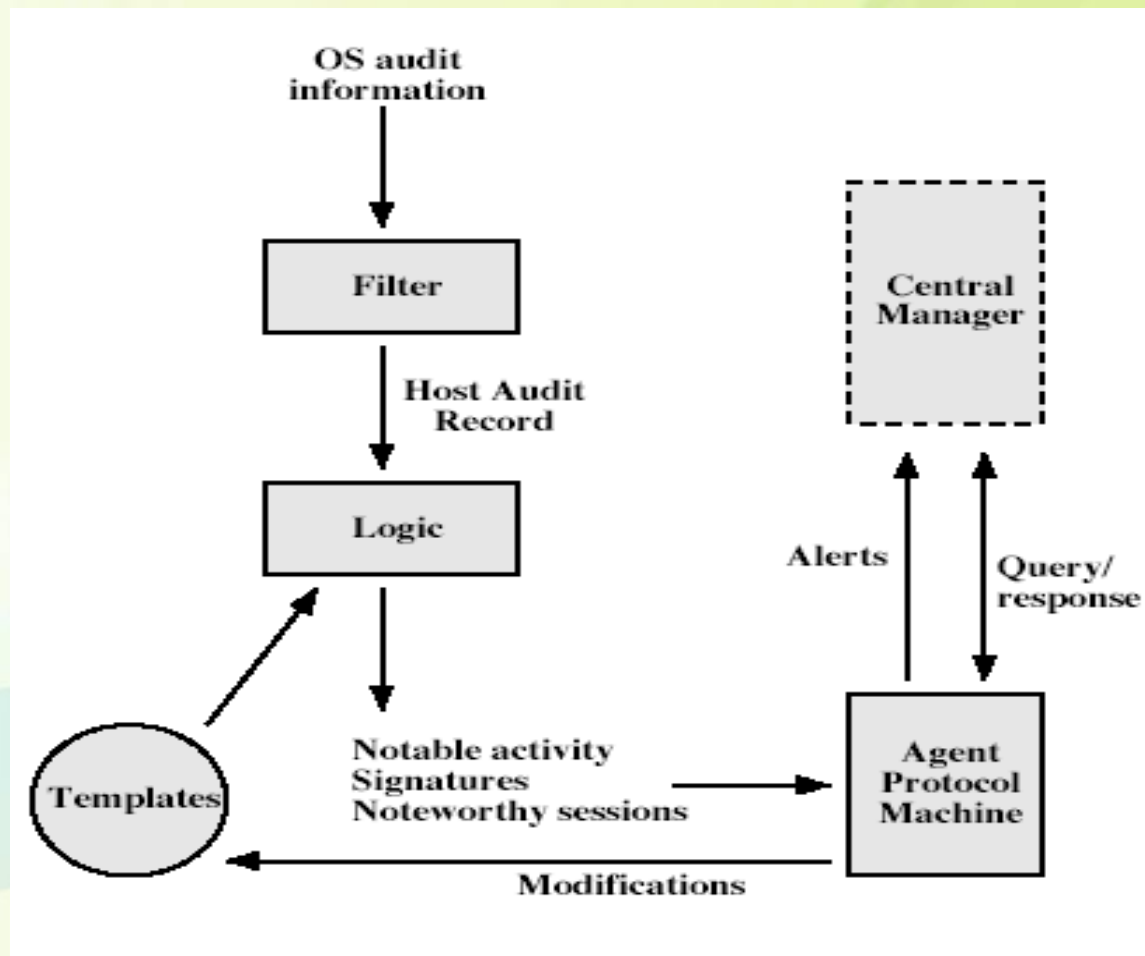
# Distributed Intrusion Detection

- traditional focus is on single systems
- but typically have networked systems
- more effective defense has these working together to detect intrusions
- issues
  - dealing with varying audit record formats
  - integrity & confidentiality of networked data
  - centralized or decentralized architecture

# Distributed Intrusion Detection - Architecture



# Distributed Intrusion Detection – Agent Implementation



# Honeypots

- decoy systems to lure attackers
  - away from accessing critical systems
  - to collect information of their activities
  - to encourage attacker to stay on system so administrator can respond
- are filled with fabricated information
- instrumented to collect detailed information on attackers activities
- may be single or multiple networked systems

# Password Management

- front-line defense against intruders
- users supply both:
  - login – determines privileges of that user
  - password – to identify them
- passwords often stored encrypted
  - Unix uses multiple DES (variant with salt)
  - more recent systems use crypto hash function

# Managing Passwords

- need policies and good user education
- ensure **every** account has a default password
- ensure users change the default passwords to something they can remember
- protect password file from general access
- set technical policies to enforce good passwords
  - minimum length (>6)
  - require a mix of upper & lower case letters, numbers, punctuation
  - block know dictionary words

# Managing Passwords

- may reactively run password guessing tools
  - note that good dictionaries exist for almost any language/interest group
- may enforce periodic changing of passwords
- have system monitor failed login attempts, & lockout account if see too many in a short period
- do need to educate users and get support
- balance requirements with user acceptance
- be aware of **social engineering** attacks

# Proactive Password Checking

- most promising approach to improving password security
- allow users to select own password
- but have system verify it is acceptable
  - simple rule enforcement (see previous slide)
  - compare against dictionary of bad passwords
  - use algorithmic (markov model or bloom filter) to detect poor choices



# Summary

- have considered:
  - problem of intrusion
  - intrusion detection (statistical & rule-based)
  - password management

# Queries ....?

